



m/v SIOUX

GENERAL

IMO Number	:	9119373
Flag	:	Malta
Port of registry	:	Valletta
Keel Laying	:	05/10/1992
Date of Built	:	31/05/1994
Classification	:	RMRS, No. 922686
Class Notation	:	KM* Ice1 R2-RSN
Type of Ship	:	General Cargo Ship
Basic functions	:	Transport of general cargoes, grain, forest products, dangerous cargoes and other bulk cargoes etc.

DIMENSIONS

Length o.a.	:	139,20	m
Length b.p.	:	135,60	m
Breadth	:	16,50	m
Depth to Main Deck	:	5,50	m
Summer draft	:	3,77	m
DWT	:	5211	t
GT	:	4976	
NRT	:	2310	

CARGO HOLD CAPACITIES

No.1 Hold	:	2.156	m ³
No.2 Hold	:	2.190	m ³
No.3 Hold	:	2.848	m ³
No.4 Hold	:	2.162	m ³
Total Cargo Volume (330.404 ft ³)	:	9.356	m ³
Cargo Hold Tank Top Strength	:	5,50	t/m ²

CARGO HATCH SIZES

No.1 Hatch	:	18.89 x 12,63	m
No.2 Hatch	:	18.89 x 12,63	m
No.3 Hatch	:	25.49 x 12,63	m
No.4 Hatch	:	18.89 x 12,63	m

PROPULSION

Main Engine	:	2x 6CHRN36/45, 883kW @ 350RPM
Propellers	:	2x FPP, 4 bladed, Dia.1800mm, Stainless Steel
Rudder	:	2x Steerable Nozzle
Bow Thruster	:	1x 95kW FPP

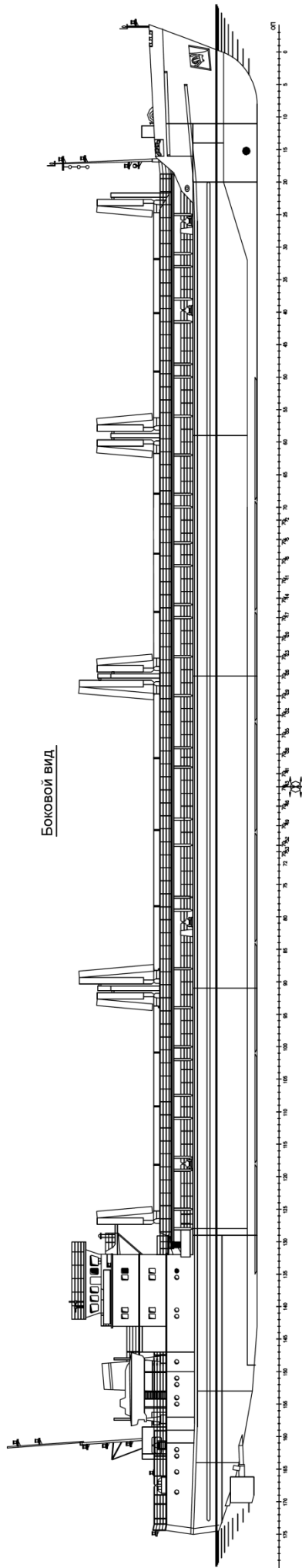
GENERATORS

Diesel Generators	:	2x 6CHN18/22 - 150 kWe (380V 50Hz)
Emergency Generator	:	1x 6 CHN 12/14 - 50 kWe
Harbor Generator	:	1x 6 CHN 12/14 - 50 kWe

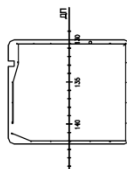
PERFORMANCE

Total Power	:	1766 kW
Speed	:	10 kn

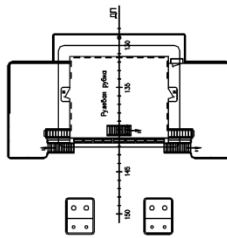
Общее расположение General plan



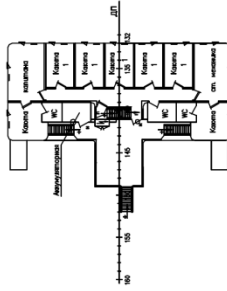
Крыша рулевой рубки



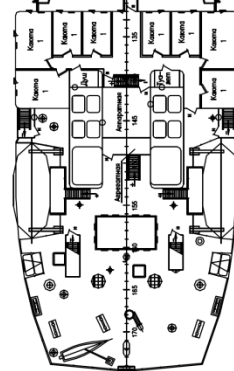
Ходовой мостик



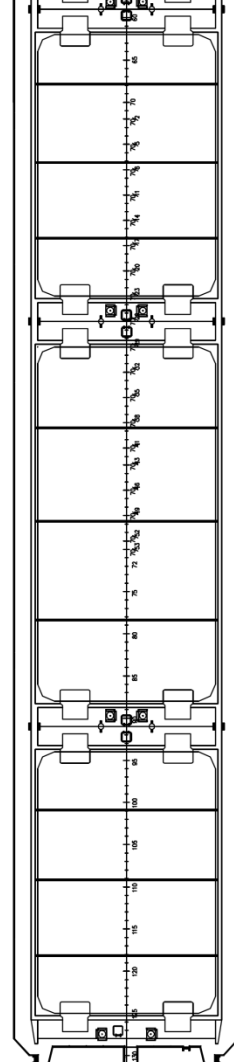
Нижний мостик



Шлюпочная палуба



Мостики трюмов



Палуба бака

